

SAVANT

Case Study:

TSP SMART SPACES & NORDIC SMART SPACES

REYKJAVIK, ICELAND

SAVANT contact:
Allie Watson Bellomy
alexandria.watson@savant.com

WIRC Media PR contact:
Micah Sheveloff (727) 258-4770
wirc1@wircmedia.com



The Austurhöfn apartment complex located on the water in Reykjavik, Iceland

SAVANT

45 Perseverance Way
Hyannis, MA 02601
508-683-2500
www.savant.com

Land of the Midnight Sun

[TSP Smart Spaces](#) and Sister Company Nordic Smart Spaces, technology integration firms specializing in audio/video and automation system design and installation, leveraged 27 years of experience to bring smart home technology to a development featuring 71 luxury apartments in Reykjavik, the capital city of Iceland. Reykjavik is the land of the midnight sun, and a beautiful destination for seasonal travel and tourism. The apartment complex, called Austurhöfn, is located on the waterfront next to the old harbor and features a stylish modern design with such amenities as panoramic windows and granite countertops. Austurhöfn perfectly illustrates how smart technology, as a part of the fundamental design plan, can bring added value and enhanced lifestyle to residents of these upscale multi-dwelling urban homes.

As a team of specialists from TSP engaged the developer at the outset of the project, it became clear that their objective was to differentiate the Austurhöfn residences from anything else in the market by offering a scalable smart home ecosystem that could, in the end, be tailored to meet the needs of each resident. Additionally, the systems had to be affordable, occupy minimal space within the apartment, create a compelling narrative for the sales team and be easily serviced by local experts. "Savant worked with us every step of the way on this project, and their proven success as a leading smart home supplier, longevity in the marketplace and willingness to participate in the design process inspired confidence in the developer as we moved forward," explained TSP President Michael Oh.

A Starting Point

The smart home hardware, including the Savant Host (the hub for the smart home system), fits neatly into a small equipment rack located in the laundry room of each Austurhöfn apartment. In Iceland, it is standard code for residential wiring to be enclosed within PVC tubing. Oh explained that

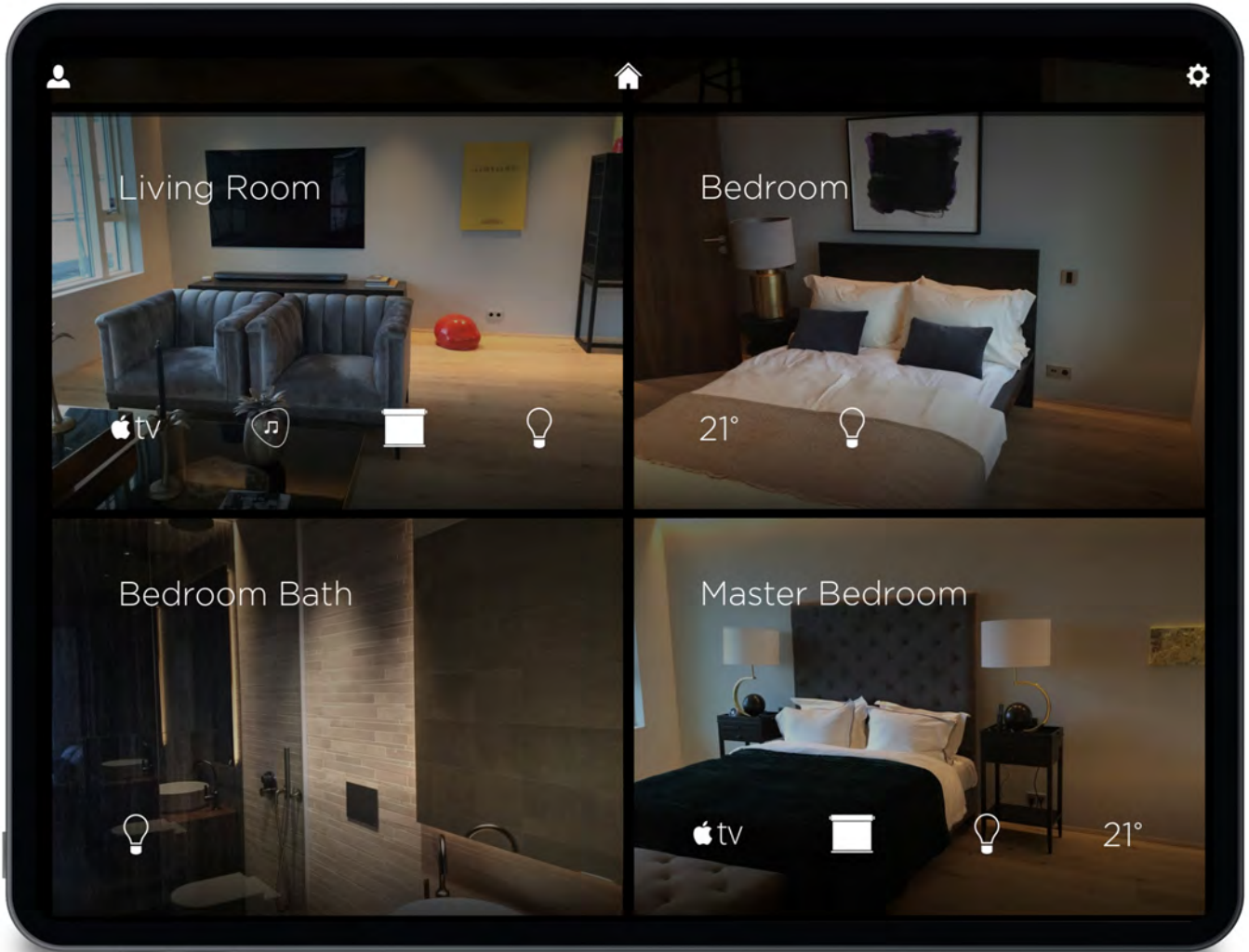


Intuitive climate control from the Savant Pro App



The Savant Smart Multistat

the presence of these wiring channels makes it easy to accommodate changes and upgrades for each resident. Leveraging the scalability of the Savant smart home ecosystem, the TSP team created a base package for Austurhöfn home owners that included the Savant Pro Host and a Savant Smart Multistat Wi-Fi-enabled thermostat, providing lighting and environmental control as well as remote door entry control accessible via the Savant Pro App for iOS or Android devices. Utilizing the Savant Pro App, residents have access to change the temperature, create HVAC schedules and even remotely adjust their thermostat to raise the temperature on their way home from work, arriving to an apartment that is toasty warm while maintaining energy efficiency throughout the day.



The Savant Pro App user interface

Available Options

TSP then created end-user options and presented them in packages much like luxury car brands offer packages to their customers. Optional smart home features for Austurhöfn residents include amenities such as Savant's award-winning Pro Remote X2, a sound bar, Amazon Alexa voice command integration, control of motorized shades and upgrades to the whole-house entertainment system including premium flat screen displays and high-performance invisible loudspeakers that all become part of Savant's intuitive smart home ecosystem. The Savant Pro Remote X2 is a handheld smart home controller that delivers an unprecedented user experience while providing a full range of control for Services and Scenes, including entertainment, lighting, climate, shades and more. The Pro Remote

X2 features an all-aluminum chassis available in three finishes, sleek, easy-to-press backlit buttons and a 3.1-inch high-resolution glass touch screen.



The Savant Pro Remote

Entertainment

The foundation of the optional entertainment system for Austurhöfn residents, Savant's IP Audio 50 has been engineered to be compact, and to mount either vertically or horizontally as applications dictate. Users will enjoy superb sound quality emanating from four amplified stereo zones (50-watts per channel) as well as access to popular streaming service providers and Apple AirPlay connectivity. The IP Audio 50 offers a broad array of inputs and outputs as well as other useful features that make it a highly versatile entertainment/smart home solution.

Savant Scenes

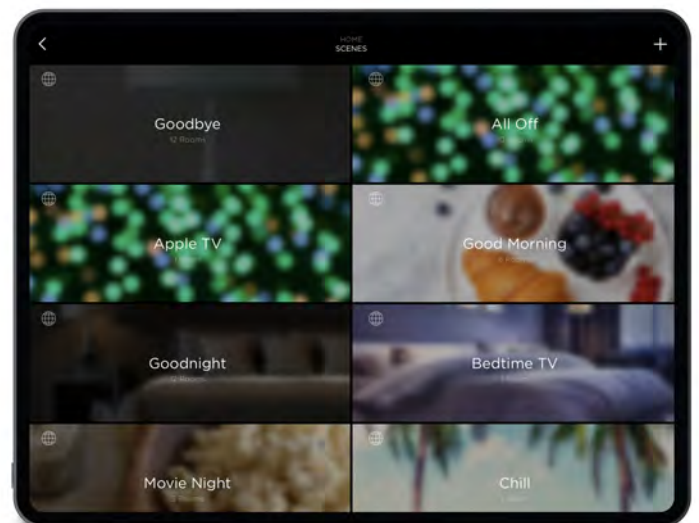
It is easy for Austurhöfn residents to enjoy the convenience of Savant Scenes, which are a collection of device settings all activated simultaneously by the touch of a button or via a single voice command. As an example, users can create and name each Savant Scene based on functionality. A scene called "Relax" might dim the lights and begin playing a favorite jazz playlist. A "Good Morning" scene could raise the blinds and turn on the news. Scenes can be activated manually or be scheduled to start automatically. Finally, Savant offers integrations with popular voice engines like Alexa and Google Home, allowing Savant Scenes to be initiated via verbal commands.

Customer Service

TSP's Icelandic subsidiary, called Nordic Smart Spaces, is located in Reykjavik and able to provide first class service to the 71 Austurhöfn residences. This localized service capability is ideal for efficiently responding to requests for new features or any other required maintenance. TSP is also quite adept at remote management, making firmware updates and other requests easy to address by simply connecting remotely to the system using Savant's cloud-based Central Management solution, engineered to securely streamline remote service by integrators while facilitating rapid response times, keeping all of the residents smiling.



The smart home equipment rack tucked out of sight in the laundry room



One-touch access to Savant Scenes makes access to smart home features fun and easy

“By designing these luxury living spaces to include smart home functionality from the outset, developers of multi-dwelling residential projects are utilizing the latest technologies to provide enhanced lifestyle for homeowners—and buyers have responded to these features with tremendous enthusiasm,” Oh explained. “Savant was an outstanding partner for us through the entire process, and the residents at Austurhöfn appreciate the intelligent functionality and intuitive user experience that has become a hallmark of the Savant brand.”

Equipment Links:

- [Savant Smart Host](#)
- [Savant Smart Multistat](#)
- [Savant Pro App](#)
- [Savant Pro Remote X2](#) *(optional)*
- [Savant IP Audio 50](#) *(optional)*

[Image Gallery](#)